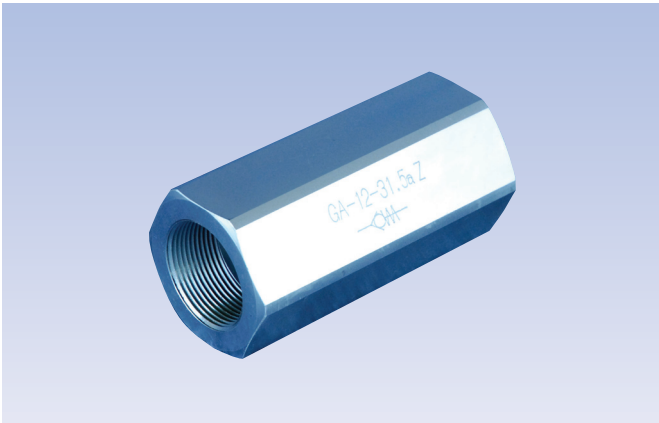


# 直通单向阀 In-Line Check Valve



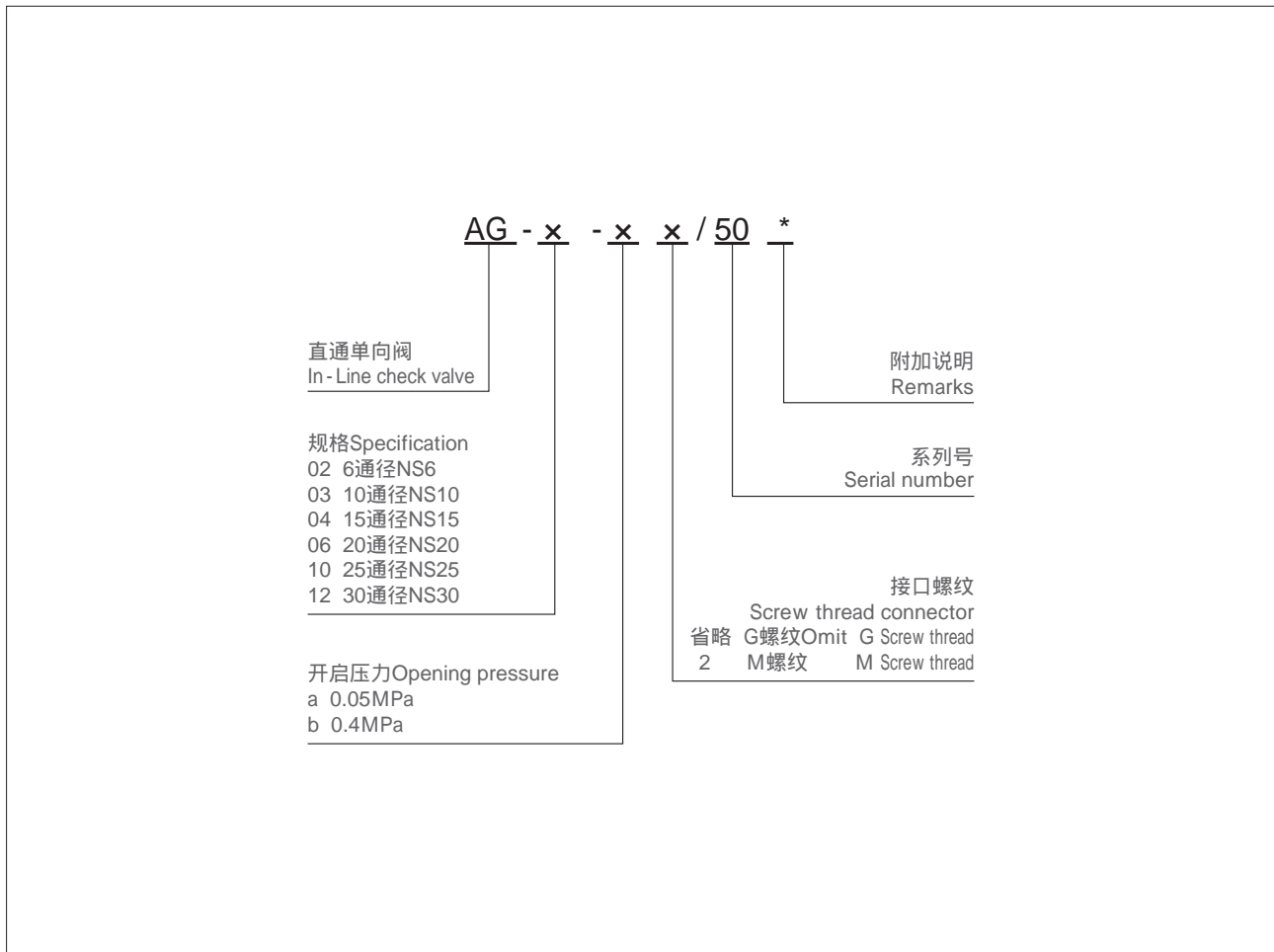
## 功能说明 Function Instruction

单向阀是只允许液流向一个方向流动，而不允许反向流动的阀。

单向阀可用于液压泵的出口，防止系统油液倒流；也可用于隔开油路之间的联系，防止油路相互干扰；也可用作旁通阀。

Check valve allows the fluid to flow only in one direction and prevents it from flowing in the opposite direction. It could be used at the outlet of hydraulic pressure pump to avoid the oil flow backwards. It can also separate the oil lines to avoid the oil lines mutual interference. It can be used as pass valve.

## 型号说明 Model description



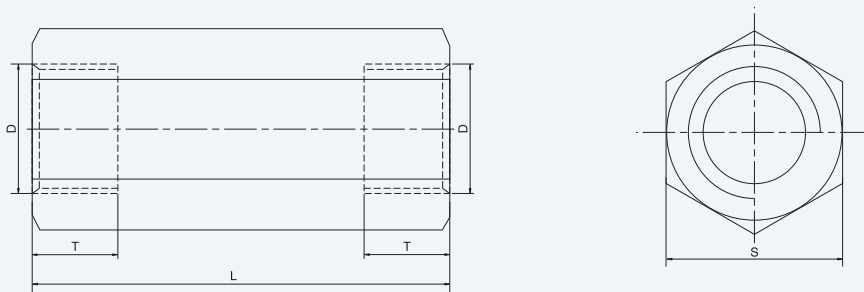
## 机能符号 Code symbol



## 性能参数 performance parameter

参数parameter	规格Specification	02	03	04	06	10	12
最高工作压力Maximum working pressure(MPa)		31.5MPa					
最大流量Maximum flow(L/min)		30	50	140	220	320	430
工作介质Working fluid		矿物质液压油、磷酸酯 Mineral oil, phosphate-ester					
介质温度范围Fluid temp( )		-20 ~ 70					
介质粘度范围Viscosity(mm <sup>2</sup> /s)		2.8 ~ 380					
开启压力Opening pressure(MPa)		a:0.05 b:0.4					

## 外形尺寸 External dimensions



规格Specification		02	03	04	06	10	12
D	英制British System	G3/8"	G1/2"	G3/4"	G1"	G1 1/4"	G1 1/2"
	公制Metric System	M18X1.5	M22X1.5	M27X2	M33X2	M42X2	M48X2
L(mm)		58	72	85	98	120	138
S(mm)		24	30	36	46	60	65
T(mm)		12	15	17	20	22	24
重量Weight(kg)		0.15	0.29	0.48	0.9	2.0	2.9

# 直角单向阀 Orthogonal Check Valve



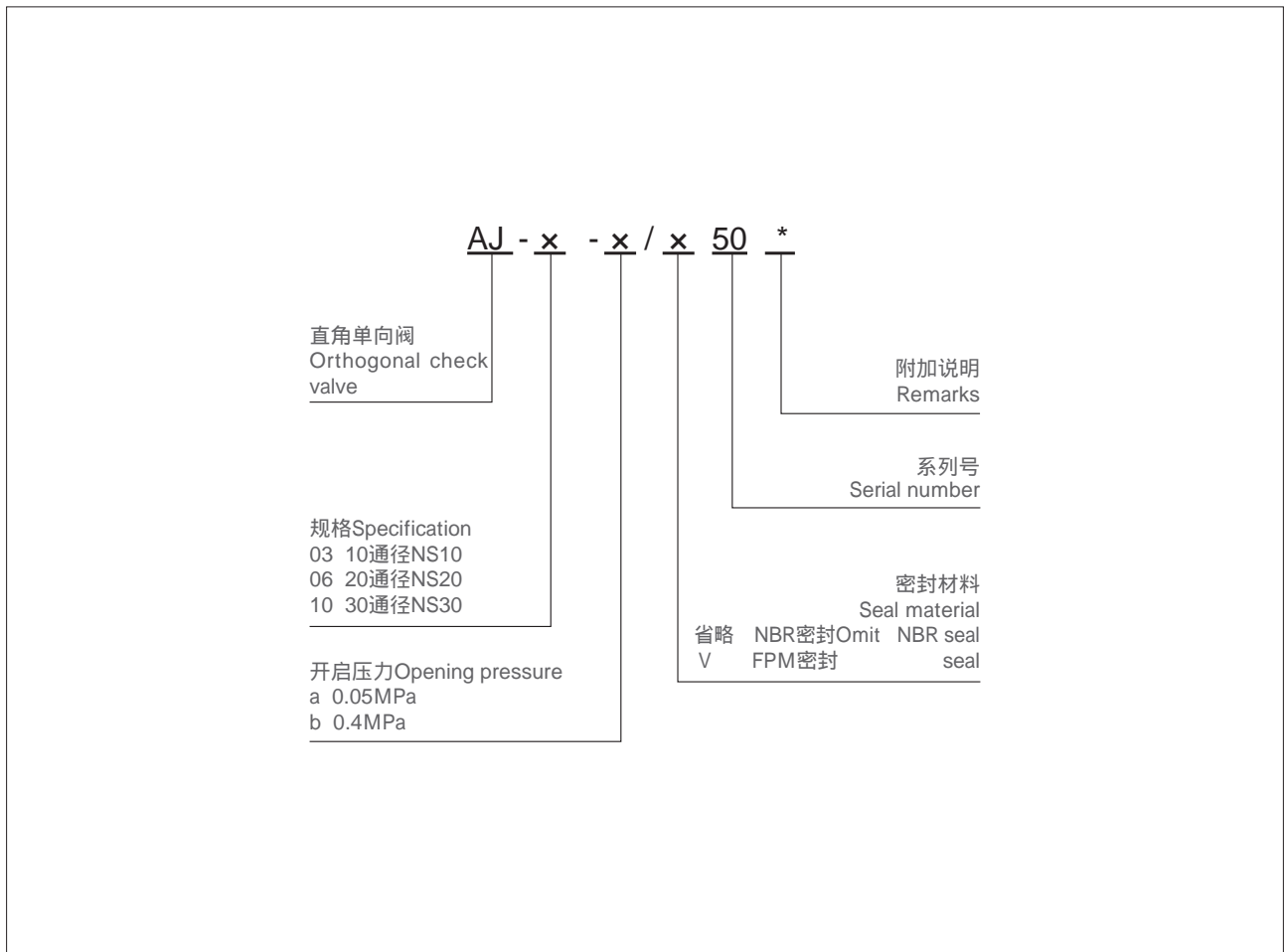
## 功能说明 Function Instruction

单向阀是只允许液流向一个方向流动，而不允许反向流动的阀。

单向阀可用于液压泵的出口，防止系统油液倒流；也可用于隔开油路之间的联系，防止油路相互干扰；也可用作旁通阀。

Check valve allows the fluid to flow only in one direction and prevents it from flowing in the opposite direction. It could be used at the outlet of hydraulic pressure pump to avoid the oil flow backwards. It can also separate the oil lines to avoid the oil lines mutual interference. It can be used as pass valve.

## 型号说明 Model description



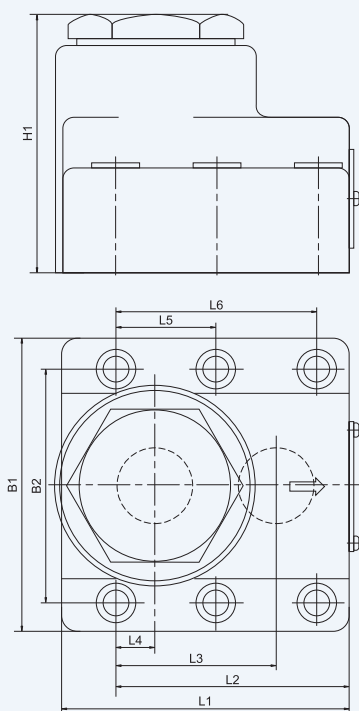
# 机能符号 Code symbol



# 性能参数 performance parameter

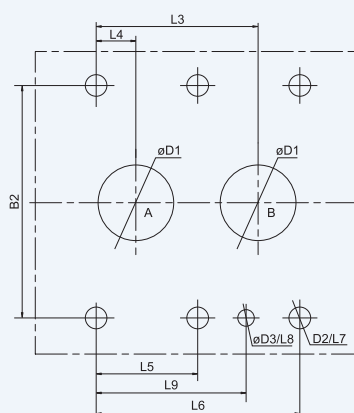
参数Parameters	规格Specification	03	06	10
最高工作压力Maximum working pressure(MPa)		31.5MPa		
最大流量Maximum flow(L/min)		50	220	430
工作介质Working fluid		矿物质液压油、磷酸酯 Mineral oil, phosphate-ester		
介质温度范围Fluid temp( )		-20 ~ 70		
介质粘度范围Viscosity(mm <sup>2</sup> /s)		2.8 ~ 380		
开启压力Opening pressure (MPa)		a:0.05 b:0.4		

# 外形尺寸 External dimensions



规格Specification	安装螺钉Mounting screw	数量Amount	拧紧力矩Tighten torque
03	M10X40 - 10.9	4	75Nm
06	M10X50 - 10.9	4	75Nm
10	M10X70 - 10.9	6	75Nm

底板油口位置尺寸  
Size of subplate oil port



规格Specification	B1	B2	L1	L2	L3	L4	L5	L6	L7	L8	L9	D1	D2	D3	H1
03	90	66.7	67	55	35.8	7.25	-	42.9	23	6	31.8	13	M10	7	67
06	103.5	79.4	84.3	72.3	49.2	11.1	-	60.3	24	6	44.5	22	M10	7	79
10	122	96.8	112	98	67.5	16.7	42.1	84.2	25	6	62.7	32	M10	7	105